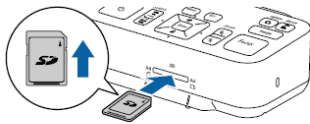


You can save images and audio from the document camera to an SD card as movies.

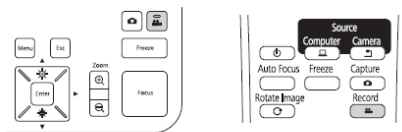
- Movies are saved in AVI format (images: Motion JPEG 720p/30 fps, audio: Linear PCM).
- You can record individual files at the following sizes:
Capacity: up to 2 GB
Recording time: up to approximately 29 minutes
If the maximum capacity or recording time are exceeded while recording, the movie up to that point is saved and the recording ends.
- You can check the amount of available free space on the SD card in SD Card Info. SD Card - SD Card Info. [p.42](#)
- Set Sleep Mode to Off to prevent the power turning off while recording. Function - Sleep Mode [p.41](#)

1 Insert an SD card into the SD card slot on the document camera.



2 Project the image you want to save.

3 Press the [Record] button to start recording.

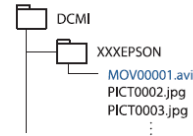


The recording indicator is lit blue while recording.

- While recording, the elapsed time is displayed at the top right of the screen. This is not displayed on the saved image.
- If there is no space on the SD card, the message "No free space on the SD Card." is displayed, and the movie is not saved.
- Do not remove the SD card while recording.
- The following operations are available while recording.
Freeze, Zoom (Pan/Tilt), Auto Focus, Brightness adjustment, Focus adjustment
Note that operation sounds are also recorded.
- While recording, a blue screen is displayed on the computer connected to the document camera using a USB cable.

4 To stop recording, press the button again.

While saving recordings, the recording indicator flashes blue, and when saving is complete the indicator turns off. Movies are saved to the following folder on the SD card:



Troubleshooting Steps:

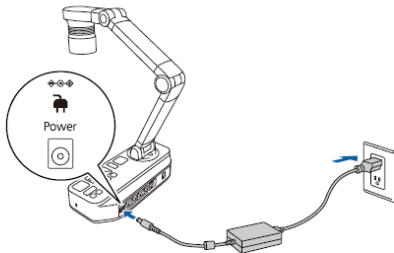
Plugging In and Turning On



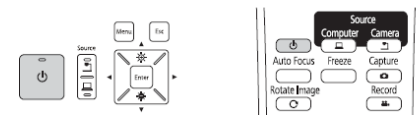
23

Connect the document camera to the projector with a cable before turning on the document camera. ▶ "Connecting" p.17

- 1 Connect the power cord as shown and plug the cord into a wall outlet.



- 2 Press the [⏻] power button on the document camera or remote control.



The power indicator flashes blue. When startup is complete, the power indicator and the camera indicator are lit blue. Startup takes approximately 15 seconds.

- 3 Turn on your projector.

- 4 Select the appropriate source on the projector depending on the port to which you connected.

Live images from the document camera are projected from the projector.

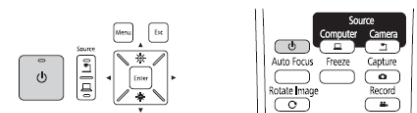
Turning Off



29

Turn off the document camera after use.

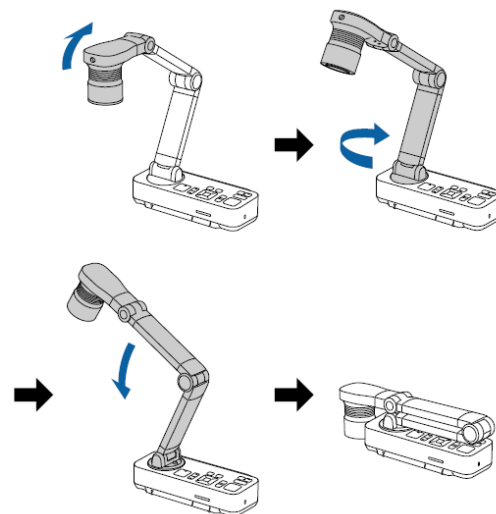
- 1 Press the [⏻] power button on the document camera or remote control.



The following message is displayed on the projected image.

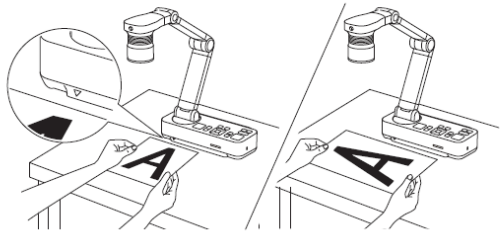
Do you want to turn off the document camera?
Yes: Press [⏻] button
No : Press any other button

- 2 Press the [⏻] power button again.
The projected image disappears, and the power indicator turns off.
- 3 Disconnect the power cord and any other connected cables, and then fold down the camera arm.

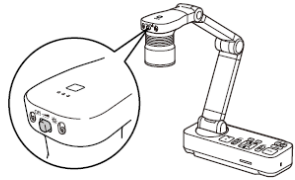


1 Place your document on the table under the camera head. Align the center of your document with the ▽ mark on the side of the document camera.

- When projecting A4-size or letter size paper, align the edge of the paper with the guides on the side of the document camera.
- The maximum paper size that can be projected is A3 landscape.

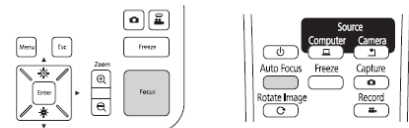


2 Slide the [☀] lamp switch to illuminate the document.



If necessary, you can adjust the brightness of the image using the [☀] or [☁] on the document camera or remote control.

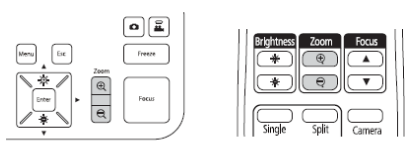
3 Press the [Focus] button on the document camera or the [Auto Focus] button on the remote control.



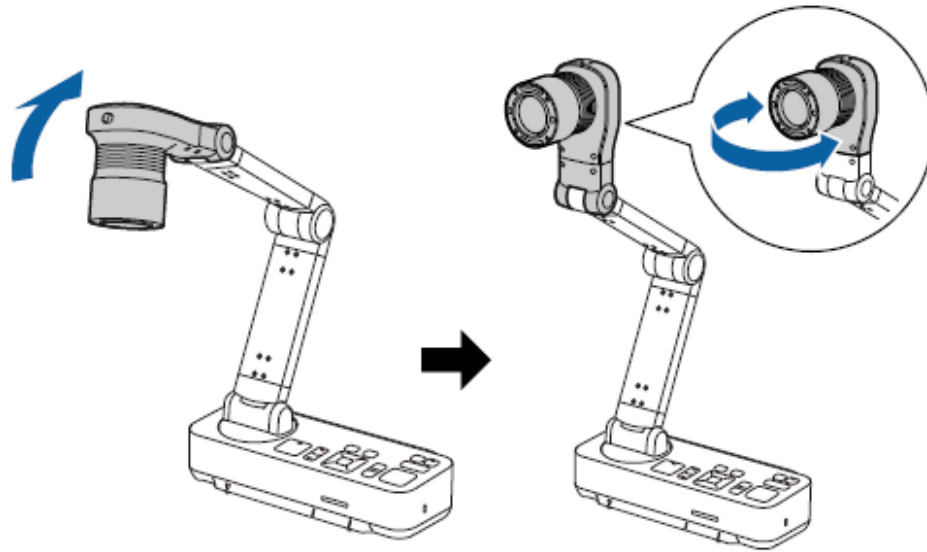
The focus is adjusted automatically.

To sharpen hard-to-focus objects, use the [◀]/[▶] buttons on the document camera, or the [Focus] buttons [▲]/[▼] on the remote control.

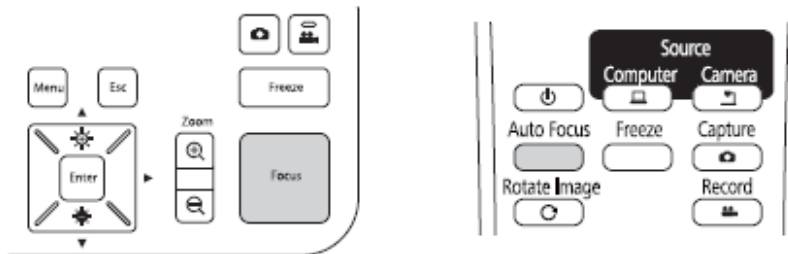
4 To zoom in on part of the image, press the [Zoom] - [⊕] button on the document camera or remote control. Press the [Zoom] - [⊖] button to zoom out.



Projecting



- 2 Press the [Focus] button on the document camera or the [Auto Focus] button on the remote control.



The image is automatically focused.



You can make an audio/video recording of your projection. The recorded images are saved to the SD card.

👉 "Recording Movies" [p.32](#)