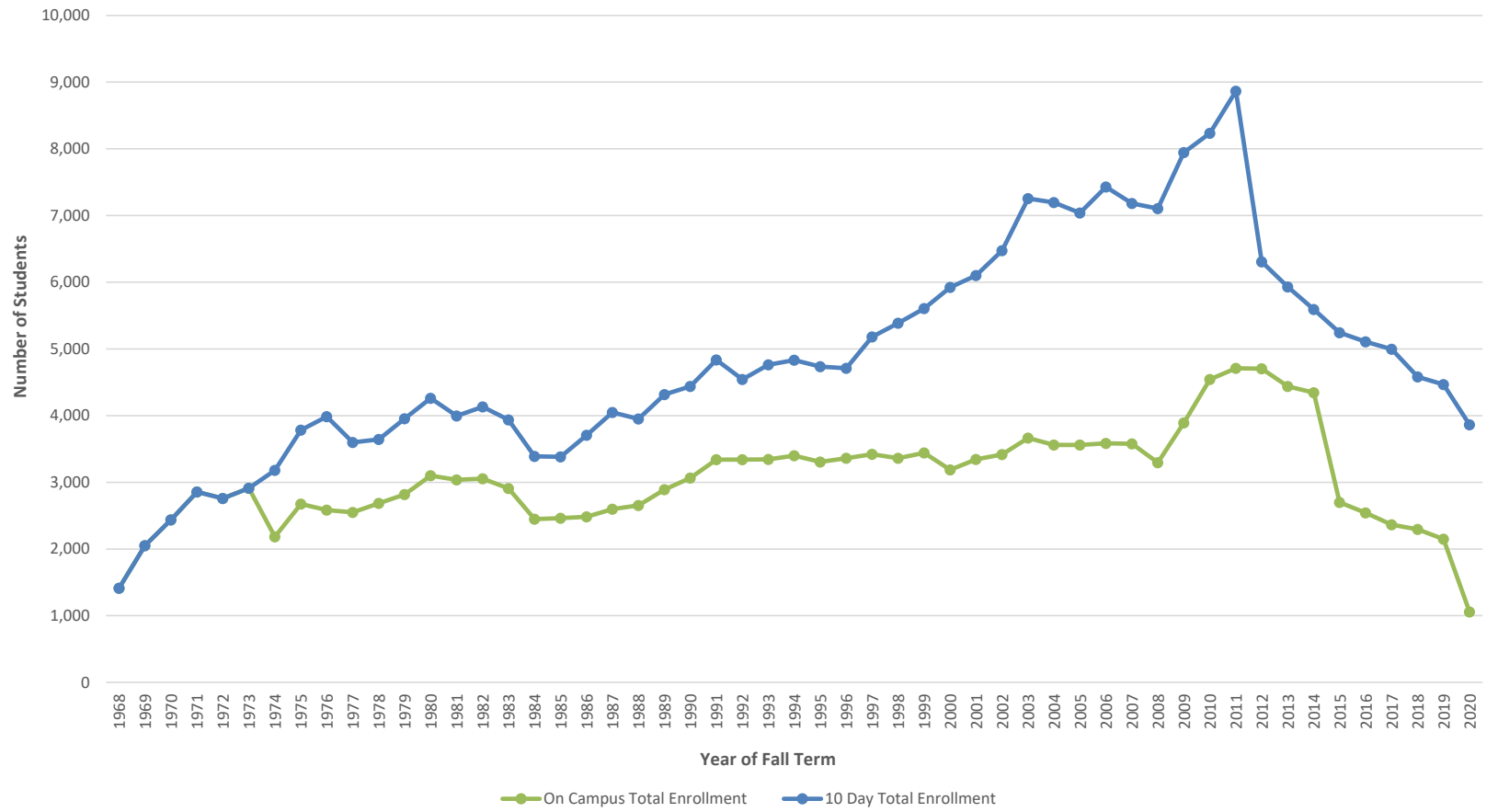


# Fall 10 Day On Campus and Total Enrollments

Year	On Campus Day		On Campus Night		On Campus Total		10 Day Total Enrollment		On Campus as % of Total	
	HC	Hours	HC	Hours	HC	Hours	HC	Hours	HC	Hours
1968	1,043	11,132.0	369	1,139.0	1,412	12,271.0	1,412	12,271.0	100.0%	100.0%
1969	1,550	16,787.0	500	1,468.0	2,050	18,255.0	2,050	18,255.0	100.0%	100.0%
1970	1,759	18,056.0	680	2,221.0	2,439	20,277.0	2,439	20,277.0	100.0%	100.0%
1971	1,955	19,761.0	902	3,733.0	2,857	23,494.0	2,857	23,494.0	100.0%	100.0%
1972	1,709	17,687.0	1,050	3,347.0	2,759	21,034.0	2,759	21,034.0	100.0%	100.0%
1973	1,630	11,039.0	1,283	3,600.0	2,913	14,639.0	2,913	14,639.0	100.0%	100.0%
1974	1,590	15,823.0	594	2,017.0	2,184	17,840.0	3,180	21,733.0	68.7%	82.1%
1975	1,835	19,286.0	841	3,917.0	2,676	23,203.0	3,784	27,661.0	70.7%	83.9%
1976	1,700	17,538.0	885	3,853.0	2,585	21,391.0	3,986	26,826.0	64.9%	79.7%
1977	1,578	15,855.0	971	4,153.0	2,549	20,008.0	3,597	24,377.0	70.9%	82.1%
1978	1,685	16,308.0	999	4,000.0	2,684	20,308.0	3,645	24,928.0	73.6%	81.5%
1979	1,778	17,527.0	1,038	4,025.0	2,816	21,552.0	3,955	25,948.0	71.2%	83.1%
1980	2,091	20,560.0	1,009	4,098.0	3,100	24,658.0	4,260	29,442.0	72.8%	83.8%
1981	2,058	19,993.0	979	4,021.0	3,037	24,014.0	3,996	27,903.0	76.0%	86.1%
1982	2,047	19,767.0	1,006	3,979.0	3,053	23,746.0	4,131	28,690.0	73.9%	82.8%
1983	1,945	18,079.0	963	3,437.0	2,908	21,516.0	3,935	25,448.0	73.9%	84.5%
1984	1,845	25,372.0	604	2,604.0	2,449	27,976.0	3,389	32,822.0	72.3%	85.2%
1985	1,863	25,737.0	599	2,452.0	2,462	28,189.0	3,383	32,921.0	72.8%	85.6%
1986	1,929	25,212.0	554	2,272.0	2,483	27,484.0	3,708	33,375.0	67.0%	82.3%
1987	2,011	26,353.0	588	2,446.0	2,599	28,799.0	4,048	35,850.0	64.2%	80.3%
1988	2,081	27,555.0	573	2,359.0	2,654	29,914.0	3,952	36,766.0	67.2%	81.4%
1989	2,287	30,636.0	605	2,295.0	2,892	32,931.0	4,317	40,122.0	67.0%	82.1%
1990	2,413	31,397.0	653	2,921.0	3,066	34,318.0	4,437	41,060.5	69.1%	83.6%
1991	2,621	35,024.0	719	3,189.0	3,340	38,213.0	4,835	45,819.0	69.1%	83.4%
1992	2,695	35,404.5	646	2,868.0	3,341	38,272.5	4,543	44,687.0	73.5%	85.6%
1993	2,807	35,119.5	536	2,365.0	3,343	37,484.5	4,763	45,452.5	70.2%	82.5%
1994	2,809	32,918.5	590	2,820.0	3,399	35,738.5	4,831	43,498.5	70.4%	82.2%
1995	2,665	33,367.0	639	3,012.0	3,304	36,379.0	4,734	44,552.0	69.8%	81.7%
1996	2,712	34,126.5	648	3,171.0	3,360	37,297.5	4,710	45,773.5	71.3%	81.5%
1997	2,823	35,257.0	597	3,081.0	3,420	38,338.0	5,182	49,704.0	66.0%	77.1%
1998	2,799	36,104.5	561	3,017.0	3,360	39,121.5	5,388	52,010.5	62.4%	75.2%
1999	2,832	36,151.5	610	2,884.0	3,442	39,035.5	5,606	53,851.5	61.4%	72.5%
2000	2,645	33,085.0	542	2,750.0	3,187	35,835.0	5,925	54,625.5	53.8%	65.6%
2001	2,814	34,871.0	529	2,935.0	3,343	37,806.0	6,102	57,286.0	54.8%	66.0%
2002	2,927	37,571.0	489	2,835.0	3,416	40,406.0	6,473	62,236.5	52.8%	64.9%
2003	3,153	39,738.5	511	2,924.5	3,664	42,663.0	7,256	67,559.2	50.5%	63.1%
2004	3,156	39,900.5	443	2,491.0	3,599	42,391.5	7,196	66,693.5	49.5%	63.6%
2005	3,090	38,860.0	469	2,778.5	3,559	41,638.5	7,038	65,205.5	50.6%	63.9%
2006	3,126	38,286.5	457	2,963.0	3,583	41,249.5	7,431	67,692.5	48.2%	60.9%
2007	3,132	37,447.5	445	2,787.5	3,577	40,235.0	7,182	64,916.5	49.8%	62.0%
2008	2,910	36,206.5	385	2,711.5	3,295	38,918.0	7,107	64,663.0	46.4%	60.2%
2009	3,450	41,713.5	440	3,017.0	3,890	44,730.5	7,945	72,788.5	49.0%	61.5%
2010	4,178	45,050.0	364	2,640.5	4,542	47,690.5	8,233	74,845.5	55.2%	63.7%
2011	4,384	42,333.5	326	2,302.5	4,710	44,636.0	8,867	74,941.0	53.1%	59.6%
2012	4,376	40,410.5	328	2,257.5	4,704	42,668.0	6,306	56,743.0	74.6%	75.2%
2013	4,109	40,521.5	330	2,321	4,439	42,842.5	5,931	55,657.0	74.8%	77.0%
2014	4,098	37,617	247	1,753.5	4,345	39,370.5	5,593	50,431.5	77.7%	78.1%
2015	2,452	31,717.5	248	1,797.5	2,700	33,515.0	5,243	48,576.5	51.5%	69.0%
2016	2,321	30,250	221	1,448	2,542	31,698.0	5,107	48,222.5	49.8%	65.7%
2017	2,204	29,363	160	1,116	2,364	30,479.0	4,996	47,299.0	47.3%	64.4%
2018	2,162	28,297	133	1,040	2,295	29,336.0	4,582	44,980	50.1%	65.2%
2019	2,037	26,430.5	112	828.5	2,149	27,259.0	4,466	43,499	48.1%	62.7%
2020	914	4,261	142	594	1,056	4,855.0	3,862	39,076	27.3%	12.4%

Comparing on Campus and Total Fall 10 Day Headcounts



# Fall 10-Day Enrollment by Gender and Type

Year	Female			Male			Full-time		Part-time		Total Head Count
	Full Time	Part Time	%	Full Time	Part Time	%	Total	%	Total	%	
1989	928	1,510	56.5%	920	959	43.5%	1,848	42.81%	2,469	57.19%	4,317
1990	1,013	1,561	58.0%	940	923	42.0%	1,953	44.02%	2,484	55.98%	4,437
1991	1,155	1,624	57.5%	1,040	1,016	42.5%	2,195	45.40%	2,640	54.60%	4,835
1992	1,136	1,482	57.6%	1,043	882	42.4%	2,179	47.96%	2,364	52.04%	4,543
1993	1,124	1,462	54.3%	1,078	1,099	45.7%	2,202	46.23%	2,561	53.77%	4,763
1994	1,065	1,505	53.2%	1,053	1,208	46.8%	2,118	43.84%	2,713	56.16%	4,831
1995	1,109	1,458	54.2%	1,039	1,128	45.8%	2,148	45.37%	2,586	54.63%	4,734
1996	1,147	1,372	53.5%	1,085	1,106	46.5%	2,232	47.39%	2,478	52.61%	4,710
1997	1,183	1,422	50.3%	1,182	1,395	49.7%	2,365	45.64%	2,817	54.36%	5,182
1998	1,284	1,381	49.5%	1,266	1,457	50.5%	2,550	47.33%	2,838	52.67%	5,388
1999	1,286	1,295	46.0%	1,330	1,695	54.0%	2,616	46.66%	2,990	53.34%	5,606
2000	1,290	1,452	46.3%	1,234	1,949	53.7%	2,524	42.60%	3,401	57.40%	5,925
2001	1,302	1,452	45.1%	1,369	1,979	54.9%	2,671	43.77%	3,431	56.23%	6,102
2002	1,505	1,549	47.2%	1,514	1,905	52.8%	3,019	46.64%	3,454	53.36%	6,473
2003	1,662	1,812	47.9%	1,593	2,189	52.1%	3,255	44.86%	4,001	55.14%	7,256
2004	1,653	1,744	47.4%	1,491	2,278	52.6%	3,144	43.87%	4,022	56.13%	7,166
2005	1,643	1,710	47.6%	1,465	2,220	52.4%	3,108	44.16%	3,930	55.84%	7,038
2006	1,627	1,844	46.7%	1,533	2,427	53.3%	3,160	42.52%	4,271	57.48%	7,431
2007	1,584	1,777	46.8%	1,453	2,368	53.2%	3,037	42.29%	4,145	57.71%	7,182
2008	1,558	1,744	46.5%	1,451	2,354	53.5%	3,009	42.34%	4,098	57.66%	7,107
2009	1,866	1,860	46.9%	1,740	2,479	53.1%	3,606	45.39%	4,339	54.61%	7,945
2010	1,928	1,808	45.4%	1,715	2,782	54.6%	3,643	44.25%	4,590	55.75%	8,233
2011	1,693	1,958	41.2%	1,648	3,568	58.8%	3,341	37.68%	5,526	62.32%	8,867
2012	1,644	1,822	55.0%	1,309	1,531	45.0%	2,953	46.83%	3,353	53.17%	6,306
2013	1,535	1,795	56.1%	1,272	1,329	43.9%	2,807	47.33%	3,124	52.67%	5,931
2014	1,386	1,763	56.3%	1,073	1,371	43.7%	2,459	43.97%	3,134	56.03%	5,593
2015	1,316	1,561	54.9%	1,075	1,291	45.1%	2,391	45.60%	2,852	54.40%	5,243
2016	1,289	1,516	54.9%	1,025	1,277	45.1%	2,314	45.31%	2,793	54.69%	5,107
2017	1,300	1,467	55.7%	1,011	1,188	44.3%	2,311	46.54%	2,655	53.46%	4,966
2018	1,236	2,644	84.7%	954	984	42.3%	2,190	47.80%	2,392	52.20%	4,582
2019	1,207	1,334	56.9%	875	1,050	43.1%	2,082	46.62%	2,384	53.38%	4,466
2020	1,127	2,290	88.5%	801	771	40.7%	1,928	49.92%	3,061	79.26%	3,862

Source: LLC 10 Day Reports

\*In Fall 2012 the 10th Day Reports began to exclude all DOC students. Before Fall 2012 the numbers include DOC students

# FALL 10-DAY HEADCOUNT BY AGE CATEGORY

Year	Mean Median		Under 17		17-20		21-24		25-30		31-39		40-55		Over 55		Unknown	Total HC
	Age	Age																
1988	29.6	25.7	2	0.1%	1212	30.7%	514	13.0%	581	14.7%	734	18.6%	380	9.6%	172	4.4%	357	3952
1989	29.8	26	3	0.1%	1445	33.5%	573	13.3%	679	15.7%	872	20.2%	517	12.0%	201	4.7%	27	4317
1990	29.5	25.1	3	0.1%	1530	34.5%	644	14.5%	642	14.5%	817	18.4%	563	12.7%	190	4.3%	48	4437
1991	29.3	24.5	4	0.1%	1731	35.8%	738	15.3%	713	14.7%	844	17.5%	564	11.7%	221	4.6%	20	4835
1992	28.5	24.3	2	0.0%	1560	34.3%	772	17.0%	669	14.7%	865	19.0%	571	12.6%	104	2.3%	0	4543
1994	28.1	24.1	23	0.5%	1738	36.0%	795	16.5%	689	14.3%	885	18.3%	607	12.6%	94	1.9%	0	4831
1995	28.1	23.5	10	0.2%	1805	38.1%	798	16.9%	605	12.8%	790	16.7%	602	12.7%	124	2.6%	0	4734
1996	27.6	22.6	16	0.3%	1956	41.5%	733	15.6%	608	12.9%	671	14.2%	639	13.6%	87	1.8%	0	4710
1997	27.2	22.5	25	0.5%	2151	41.5%	855	16.5%	681	13.1%	752	14.5%	629	12.1%	89	1.7%	0	5182
1998	27.5	22.5	17	0.3%	2166	40.2%	942	17.5%	663	12.3%	736	13.7%	700	13.0%	104	1.9%	60	5388
1999	27.3	22.6	23	0.4%	2254	40.2%	964	17.2%	750	13.4%	779	13.9%	686	12.2%	88	1.6%	62	5606
2000	27.6	23.0	74	1.2%	2208	37.3%	1056	17.8%	848	14.3%	783	13.2%	727	12.3%	127	2.1%	102	5925
2010	27.2	23.0	157	1.9%	3095	37.6%	1250	15.2%	1279	15.5%	1240	15.1%	1027	12.5%	185	2.2%	0	8233
2011	27.8	24.0	186	2.1%	3004	33.9%	1427	16.1%	1399	15.8%	1420	16.0%	1218	13.7%	213	2.4%	0	8867
2012	26.2	21.0	194	3.1%	2840	45.0%	994	15.8%	710	11.3%	637	10.1%	717	11.4%	214	3.4%	0	6306
2013	25.2	21.0	195	3.3%	2837	47.8%	972	16.4%	608	10.3%	599	10.1%	592	10.0%	128	2.2%	0	5931
2014	25.2	20.0	253	4.5%	2692	48.1%	840	15.0%	575	10.3%	539	9.6%	540	9.7%	154	2.8%	0	5593
2015	24.3	20.0	285	5.4%	2667	50.9%	760	14.5%	521	9.9%	455	8.7%	448	8.5%	107	2.0%	0	5243
2016	23.7	19.0	285	5.6%	2720	53.3%	677	13.3%	523	10.2%	426	8.3%	408	8.0%	68	1.3%	0	5107
2017	23.5	20.0	332	6.7%	2675	53.9%	643	12.9%	472	9.5%	398	8.0%	372	7.5%	74	1.5%	0	4966
2018	23.0	19.0	277	6.0%	2541	55.5%	612	13.4%	465	10.1%	359	7.8%	275	6.0%	53	1.2%	0	4582
2019	22.7	19.0	335	7.5%	2504	56.1%	565	12.7%	421	9.4%	329	7.4%	270	6.0%	42	0.9%	0	4466
2020	21.9	19.0	283	7.3%	2323	60.2%	448	11.6%	345	8.9%	261	6.8%	182	4.7%	20	0.5%	0	3862

Source: 10 Day Reports

Data from 2012 forward excludes correctional students

# Fall Enrollment By In-District County

COUNTY	1991	1992	1993	1994	1995	1996	1997	1998	1999	2000	2001	2002	2003	2004	2005	2006	2007	2008	2009	2010	2011	2012	2013	2014	2015	2016
Christian	130	125	99	126	105	130	108	85	144	106	111	103	144	138	209	289	244	197	255	228	201	179	170	201	200	293
Clark	271	246	218	216	207	198	224	198	177	173	166	196	222	194	237	388	386	431	460	352	324	325	300	270	281	241
Clay	38	32	31	34	36	39	36	32	48	40	44	41	54	41	23	17	26	27	23	40	33	30	29	45	40	23
Coles	1421	1423	1386	1330	1344	1430	1452	1481	1411	1359	1454	1526	1612	1570	880	1641	1829	1779	2140	1910	1832	1833	1776	1650	1592	1534
Cumberland	359	283	267	288	290	287	294	313	276	257	271	321	341	346	205	285	307	304	375	320	299	258	286	260	242	252
Douglas	71	49	59	104	74	61	89	105	80	60	79	81	85	93	65	85	69	102	90	136	102	121	119	97	92	95
Edgar	268	231	274	235	262	191	217	209	190	210	189	177	193	202	179	278	319	310	388	356	312	300	283	285	291	286
Effingham	883	909	873	859	937	920	920	989	932	938	923	959	1112	1124	755	1325	1490	1422	1610	1374	1282	1188	1185	1081	1024	987
Fayette	160	156	141	152	168	139	157	151	157	176	176	185	234	266	120	148	217	187	214	186	167	269	156	138	125	121
Jasper	37	39	41	54	54	53	61	52	62	60	62	71	77	55	56	59	40	43	44	59	37	31	35	33	19	26
Moultrie	325	320	330	279	267	278	300	289	278	264	261	273	266	253	203	284	322	329	390	308	298	323	292	306	251	272
Shelby	473	431	497	467	447	460	470	490	557	434	431	436	461	485	377	561	623	580	634	575	544	578	571	513	458	543
<b>Total</b>	<b>4436</b>	<b>4244</b>	<b>4216</b>	<b>4144</b>	<b>4191</b>	<b>4186</b>	<b>4328</b>	<b>4394</b>	<b>4312</b>	<b>4077</b>	<b>4167</b>	<b>4369</b>	<b>4801</b>	<b>4767</b>	<b>3309</b>	<b>5360</b>	<b>5872</b>	<b>5711</b>	<b>6623</b>	<b>7854</b>	<b>5431</b>	<b>5435</b>	<b>5202</b>	<b>4879</b>	<b>4615</b>	<b>4673</b>

COUNTY	2017	2018	2019	2020
Christian	172	150	175	232
Clark	193	219	213	183
Clay	19	23	19	20
Coles	1183	1507	1364	998
Cumberland	208	194	201	171
Douglas	67	103	124	109
Edgar	208	237	221	185
Effingham	774	949	896	868
Fayette	89	123	129	145
Jasper	28	34	39	31
Moultrie	209	238	216	185
Shelby	412	463	458	361
<b>Total</b>	<b>3562</b>	<b>4240</b>	<b>4055</b>	<b>3488</b>

Source: 10 Day Reports

**Enrollment by Degree Programs**

**Fall 1972**

**Top 5 AA-AS**

Business	126
Agriculture	41
Social Sci Ed	40
Phys Ed	37
EI Ed	37

**Top 5 AAS**

Child Care	80
Secretarial Sci	73
Electronics	54
Automotive	54
Bus Management	48

**Top 3 Certificates**

Practical Nurse	62
Cosmetology	22
General Clerical	20

**Fall 1977**

**Top 5 AA-AS**

Business	59
Accounting	45
Agriculture	35
Engineering	31
EI Ed	27

**Top 5 AAS**

Ag Production	78
Bus Management	65
Data Processing	57
Secretarial Sci	53
Electronics	48

**Top 3 Certificates**

Practical Nurse	62
Cosmetology	49
Co-op Ed	25

**Fall 1982**

**Top 5 AA-AS**

Bus Management	183
Engineering	54
EI Ed	47
Phys Ed	25
Special Ed	15

**Top 5 AAS**

Data Processing	167
Ag Production	77
Ag Production	66
Bus Management	63
Accounting	63
Civil Eng Tech	63

**Top 3 Certificates**

Practical Nursing	90
Cosmetology	54
Ind Eq Maint	30

**Fall 1987**

**Top 5 AA-AS**

Bus Admin	196
Pre-Nursing	89
EI Ed	66
Engineering	65
Psychology	46

**Top 5 AAS**

Civil Eng Tech	66
Data Processing	65
Accounting	56
Automotive	44
Law Enforcement	43

**Top 3 Certificates**

Practical Nursing	57
Cosmetology	54
Ind Eq Maint	18

**Fall 1992**

**Top 5 AA-AS**

Bus Admin	348
Pre-Nursing	273
EI Ed	92
Psychology	87
Law Enforcement	71

**Top 5 AAS**

Assoc Deg	117
Civil Eng	101
Accounting	99
P T Assis	78
Law Enfc	62

**Top 3 Certificates**

Practical Nursing	77
Cosmetology	63
Nurse Assistant	60

**Fall 1997**

**Top 5 AA-AS**

Bus Admin	279
EI Ed	147
Law Enforcement	94
Psychology	88
Engineering	67

**Top 5 AAS**

Assoc Deg Nurse	186
Computer Info Sys	110
P T Assistant	99
Child Care	97
Dental Hygiene	97

**Top 3 Certificates**

Practical Nursing	67
Cosmetology	55
Ind Eq Maint	31

**Fall 2003**

**Top 5 AA-AS**

Business Admin	294
EI Ed.	201
Criminal Justice	164
Psychology	101
Physical Ed.	60

**Top 5 AAS**

Assoc Deg Nurse	186
Child Care	110
Dental Hygiene	106
Network Admin	106
Human Services	101

**Top 3 Certificates**

Cosmetology	124
Practical Nursing	98
Massage Therapy	36

**Fall 2008**

**Top 5 AA-AS**

Business Admin	264
Criminal Justice	143
EI Ed.	115
Pre-Nursing	86
Psychology	85

**Top 5 AAS**

Assoc Deg Nursing	326
Physical Ther Assist	121
Dental Hygiene	108
Early Childhood	105
Human Services	92

**Top 3 Certificates**

Practical Nurse	134
Cosmetology	67
Medical Coding	57

**Fall 2013**

**Top 5 AA-AS**

Business Admin	263
Criminal Justice	167
Psychology	111
Pre-Nursing	108
Agriculture	69

**Top 5 AAS**

Assoc Deg Nursing	113
Accounting	73
Management	66
John Deere Ag Tech	62
Ag Business & Supply	62

**Top 3 Certificates**

Practical Nurse	51
Cosmetology	44
Medical Coding	31

**Fall 2020**

**Top 5 AA-AS**

Business Admin	201
Agriculture	72
Criminal Justice	66
Elementary Ed	63
Psychology	58

**Top 5 AAS**

Assoc Deg Nursing	171
Management	61
HIMC	51
John Deere Ag Tech	41
Accounting	36

**Top 3 Certificates**

Practical Nurse	48
Cosmetology	37
Medical Coding	24

	Fall 1972	Fall 1977	Fall 1982	Fall 1987	Fall 1992	Fall 1997	Fall 2003	Fall 2008	Fall 2013	Fall 2020										
AA	47	3%	382	11%	336	10%	79	3%	77	2%	555	14%	888	20%	791	20%	753	19%	951	37%
AES/AS	483	29%	623	19%	1144	33%	1474	55%	2024	55%	1668	42%	1132	26%	1036	26%	995	25%	172	7%
ALS	291	17%	229	7%	56	2%	19	1%	7	0%	7	0%	3	0%	472	12%	535	13%	313	12%
AAS	710	42%	1287	38%	1469	42%	835	31%	1218	32%	1412	36%	1751	40%	1321	33%	1361	34%	939	36%
Cert	152	9%	820	25%	485	14%	267	10%	355	10%	332	8%	589	13%	433	11%	338	8%	223	9%

Data Source: 10 Day Reports  
Data Excludes Corrections Students