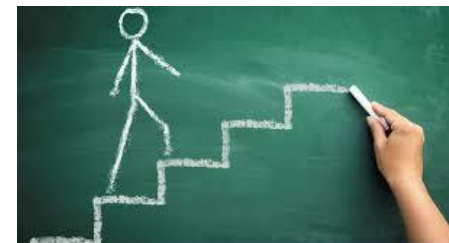


GUIDED PATHWAYS: META~MAJORS AND BEYOND!

LAKE LAND COLLEGE MARCH EMPLOYEE GROUP MEETINGS
GPLT
MARCH 2019

LAKE LAND
COLLEGE

KEY PERFORMANCE INDICATORS



Completion/Graduation Rate- Associate Degree <i>Source: 150% Completion Rate, First Time Degree Seekers Fall 2015 Cohort (FT), Internal Analysis</i>	53.6%
Completion/Graduation Rate- Associate Degree <i>Source: 150% Completion Rate, First Time Degree Seekers Fall 2015 Cohort (PT), Internal Analysis</i>	10.6%
Retention Rate – All Degree Seeking Students <i>Source: Fall-to-Fall Retention Rate for all Degree Seeking Students, Fall 2017 Cohort Internal Analysis</i>	69%
Students Assessing into 1+ Remedial Courses <i>Source: Internal Analysis, Fall 2014 First Time Degree Seeking Cohort</i>	73%

GUIDED PATHWAYS ESSENTIAL PRACTICES

1. Clarify **paths** to student end goals
2. Help students **choose and enter a pathway**
3. Help students **stay on a path**
4. Ensure that **students are learning**



PRIORITIES IDENTIFIED:



1. Faculty & Staff **Engagement** – Describe the purpose of pathways, meta~majors, and implications for the student experience
2. Conduct staff and student **focus groups**
3. Pilot **mapping process** in one division
4. Develop **meta~majors**

Meta~Major Objectives

01

Provide students with a clear pathway to graduation

02

Help students make connections between their studies and different career tracks

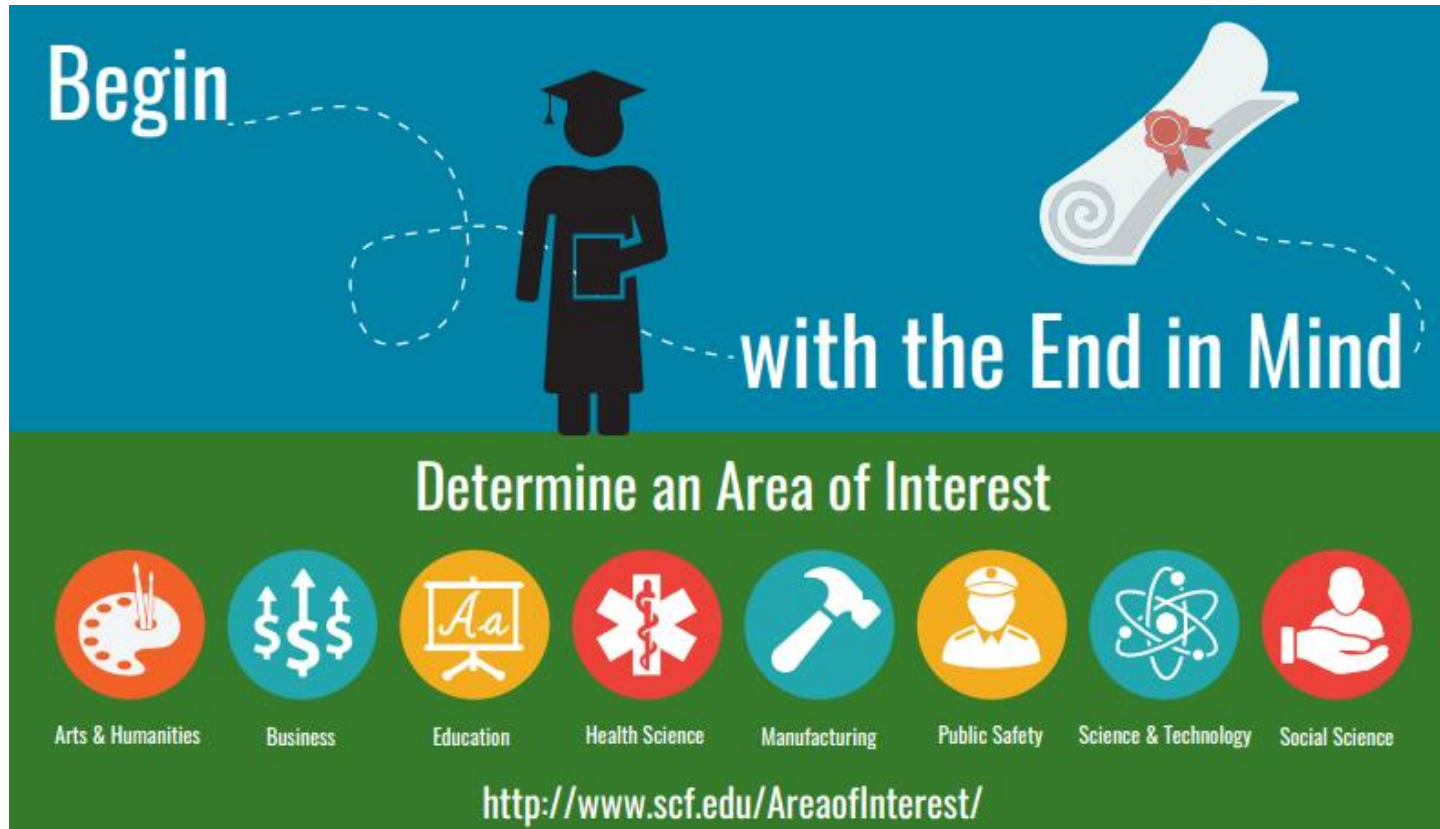
03

Designed to help improve student retention

04

Streamline the process of major selection by limiting choices at the onset

META~MAJORS



- Are Commonly Known as:
 - Program Clusters
 - Career Clusters
 - Areas of Study
 - Areas of Interest
 - Programs of Study
 - Communities of Interest

OUR PROCESS

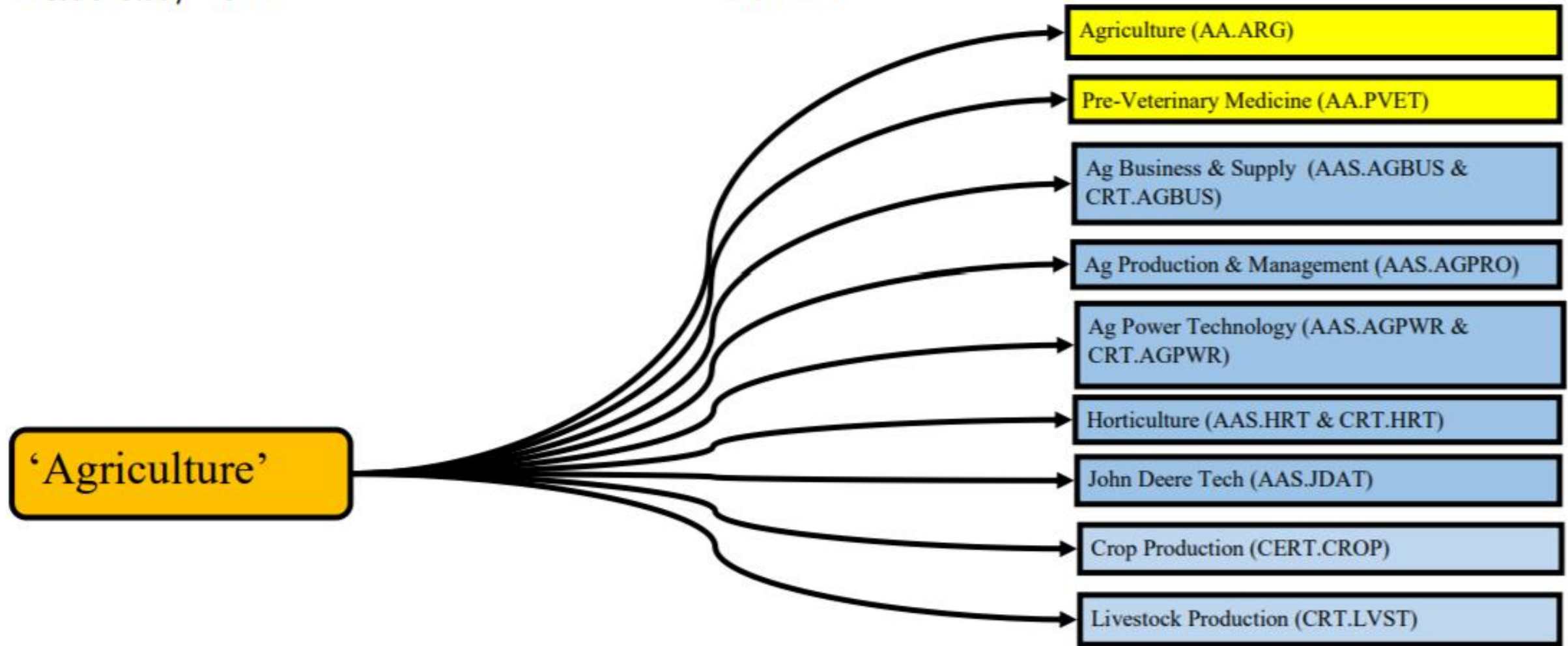
- Researched best practices
- Completed visual mapping of programs
- Researched common curriculum within proposed meta~majors
- Spoke to faculty about what classes they recommend when advising students

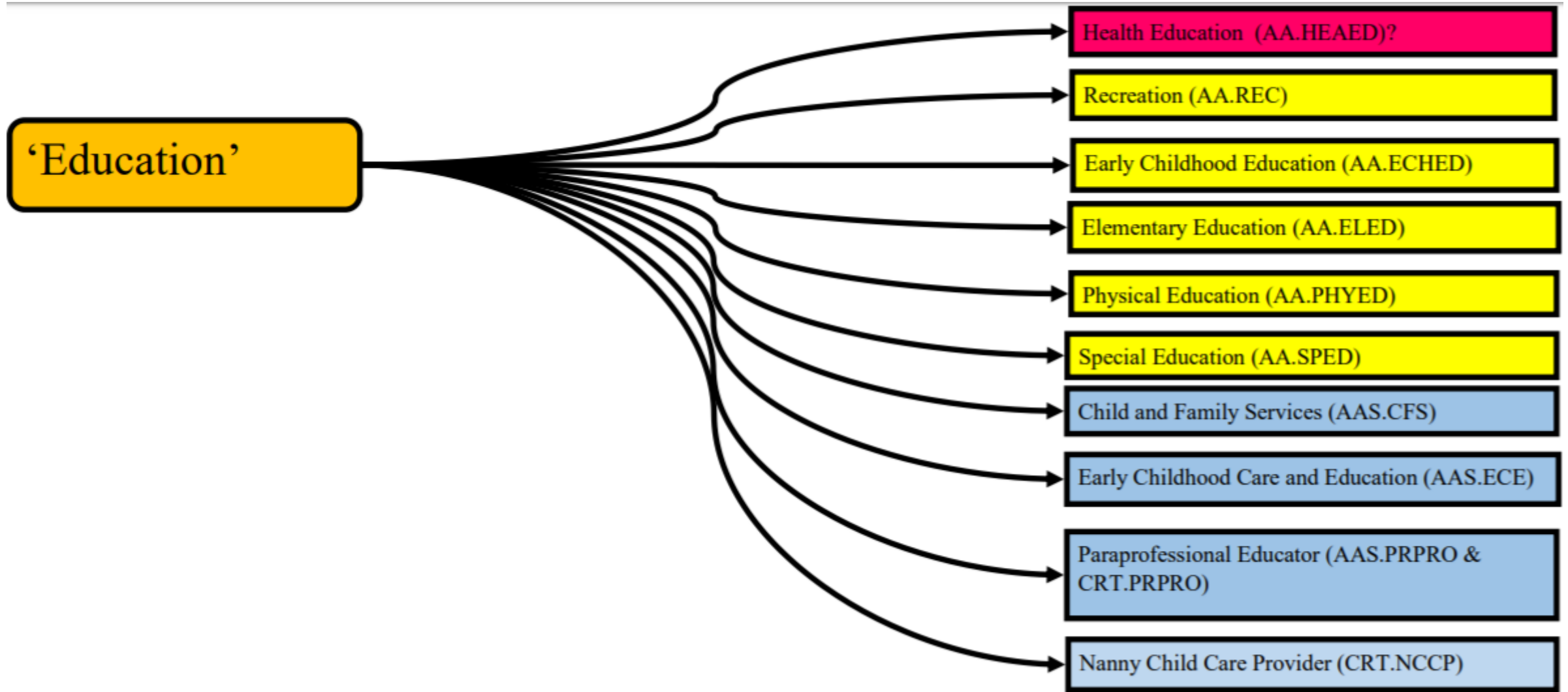
Guided Pathways Leadership Team
Area of Studies Curriculum Review

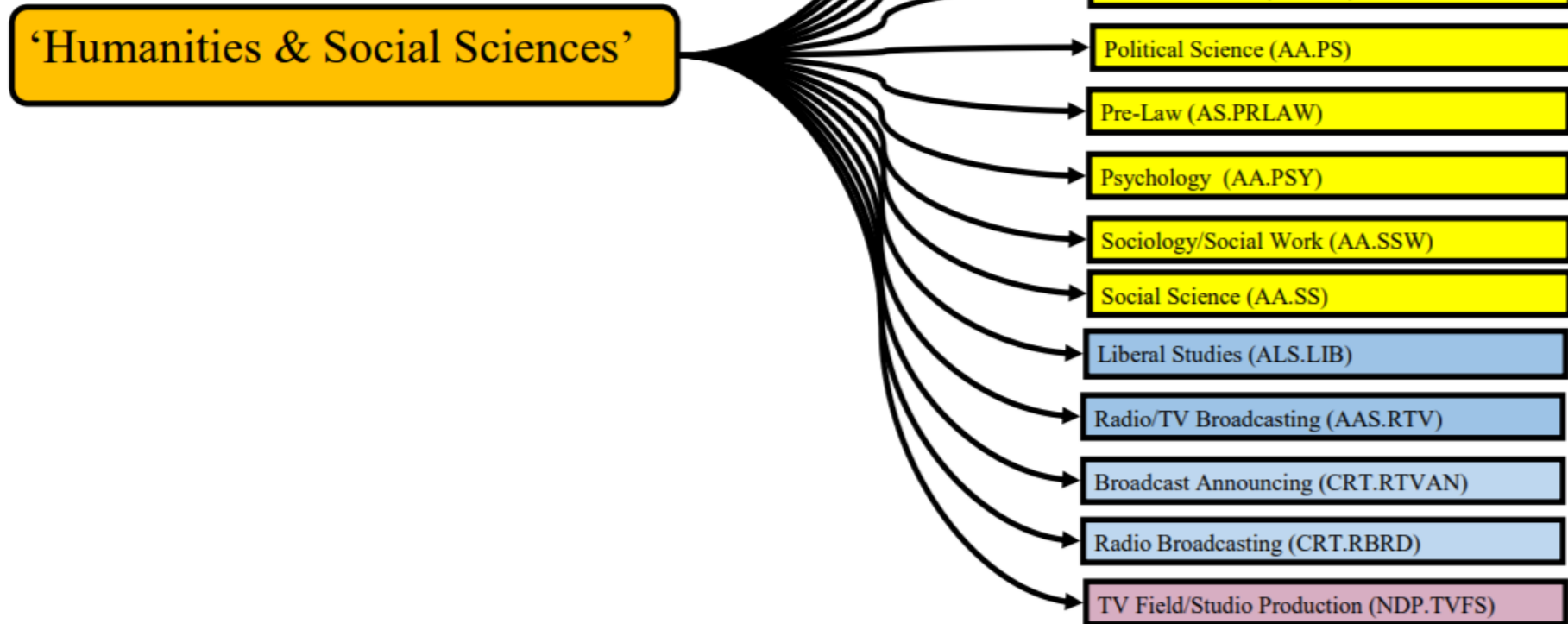
Meta-Major/Area of Study: Math and Science

Gen Ed Category (AAS)	Hrs AAS	Hrs AA	Hrs AS	Chemistry (AS)	Secondary Ed Chemistry (AS)	Engineering Science (AS)	Pre-Engineering (AS)	Physics (AS)	Secondary Ed. Physics (AS)	Earth Science & Geography (AS)
Communication	3	9	9	ENG 120 (3) ENG 121 (3) SPE 111 (3)	ENG 120 (3) ENG 121 (3) SPE 111 (3)	ENG 120 (3) ENG 121 (3) SPE 111 (3)	ENG 120 (3) ENG 121 (3) SPE 111 (3)	ENG 120 (3) ENG 121 (3) SPE 111 (3)	ENG 120 (3) ENG 121 (3) SPE 111 (3)	ENG120 (3) ENG 121 (3) SPE 111 (3)
Social Science	3	9	6	PSY 271 (3) SOC 280 (3)	PSY 274 or 279 (3) POS 160 (3) GEO 140 or ANT 200 (3)	ECO 231 (3) ECO 232 (3)	ECO 231 (3) <i>Any other (3hrs)</i>	<i>Any (6hrs)</i>	PSY 274 or 279 (3) POS 160 (3) GEO 140 or ANT 200 (3)	<i>Any 6 hrs.</i> GEO 140 (3) <i>Any other (3)</i> <i>Likely to add new GIS gen ed Su 19</i>
Math (Science)	3	3	3	MAT 241 (5)	MAT 241 (5)	MAT 241 (5)	MAT 241 (5)	MAT 241 (5)	MAT 241 (5)	MAT 125 (3)
Phy/Life Science	N/A	7-8	7-8	BIO 100 (4) CHM 150 (4)	BIO 100 (4) CHM 150 (4)	BIO 100 (4) PHY 140 (4)	BIO 100 (4) PHY 140 (4)	BIO 100, 130, 150, 160 (3-4) PHY 140 (4)	BIO 100/130/150/160 (3-4) PHY 140 (4)	BIO 130 (4) ESC 102 (4)
Humanities/Fine Arts	N/A	9	6	HUM 150 (3) PHI 270 or 290 (3)	MUS 229 (3) HIS 153 (3) ART 250 (3)	<i>ANY (6hrs)</i>	<i>ANY (6hrs)</i>	<i>ANY (6hrs)</i>	MUS 229 (3) HIS 153 (3) ART 250 (3)	<i>Any HUM (3)</i> HIS 153, HIS 250, HIS 252 <i>Any FA (3)</i>
Additional Gen Ed Hours	6	N/A	6 (1 Math 1 Science)	MAT 242 (4) CHM 151 (4)	MAT 242 (4) CHM 151 (4)	MAT 242 (4) PHY 141 (4)	MAT 242 (4) PHY 141 (4)	MAT 242 (4) PHY 141 (4)	MAT 242 (4) PHY 141 (4)	MAT 241 (5) or 132 (3) ESC 104 (4)
Electives	15	37-38	37-38	PHY 140 (4) PHY 141 (4) PHY 142 (4) CHM 243 (4) CHM 253 (1) CHM 244 (4) CHM 254 (1) PHY 140 (4) PHY 141 (4) CHM 254 (1) MAT 243 (4)	CHM 243 (4) CHM 253 (1) CHM 244 (4) CHM 254 (1) PHY 140 (4) PHY 141 (4) <u>PHY 141 (4)</u> EDU 100 (3) EDU 210 (3)	MAT 151 (3) MAT 243 (4) MAT 245 (3) MAT 255 (3) CHM 150 (4) CHM 151 (4) CHM 151 (4) PHY 141 (4) PHY 239 (4) PHY 240 (4) PHY 240 (4) TEC 103 (3)	MAT 151 (3) MAT 243 (4) MAT 245 (3) CHM 150 (4) CHM 151 (4) PHY 141 (4) PHY 239 (4) PHY 240 (4) PHY 240 (4) TEC 103 (3)	MAT 243 (4) CHM 150 (4) CHM 151 (4) PHY 141 (4) PHY 142 (4) PHY 239 (4) PHY 240 (4) MAT 245 (3) MAT 255 (3) MAT 151 (3)?	CHM 150 (4) CHM 151 (4) PHY 141 (4) <u>PHY 142 (4)</u> EDU 100 (3) EDU 210 (3) PHY 130 (4) PHY 131 (4)	ESC 106 (4) ESC 100 (4) CHM 111 (4) GIS 091 (3) CIS 101 (2) CIS 160 (3) CET 065 (2) GIS 095 (3)
Total Hours of "Electives"										
Total Hours of Degree				68/64	67/64	77/64	77/64	70-76/64	64/64	67-69/64

DRAFT



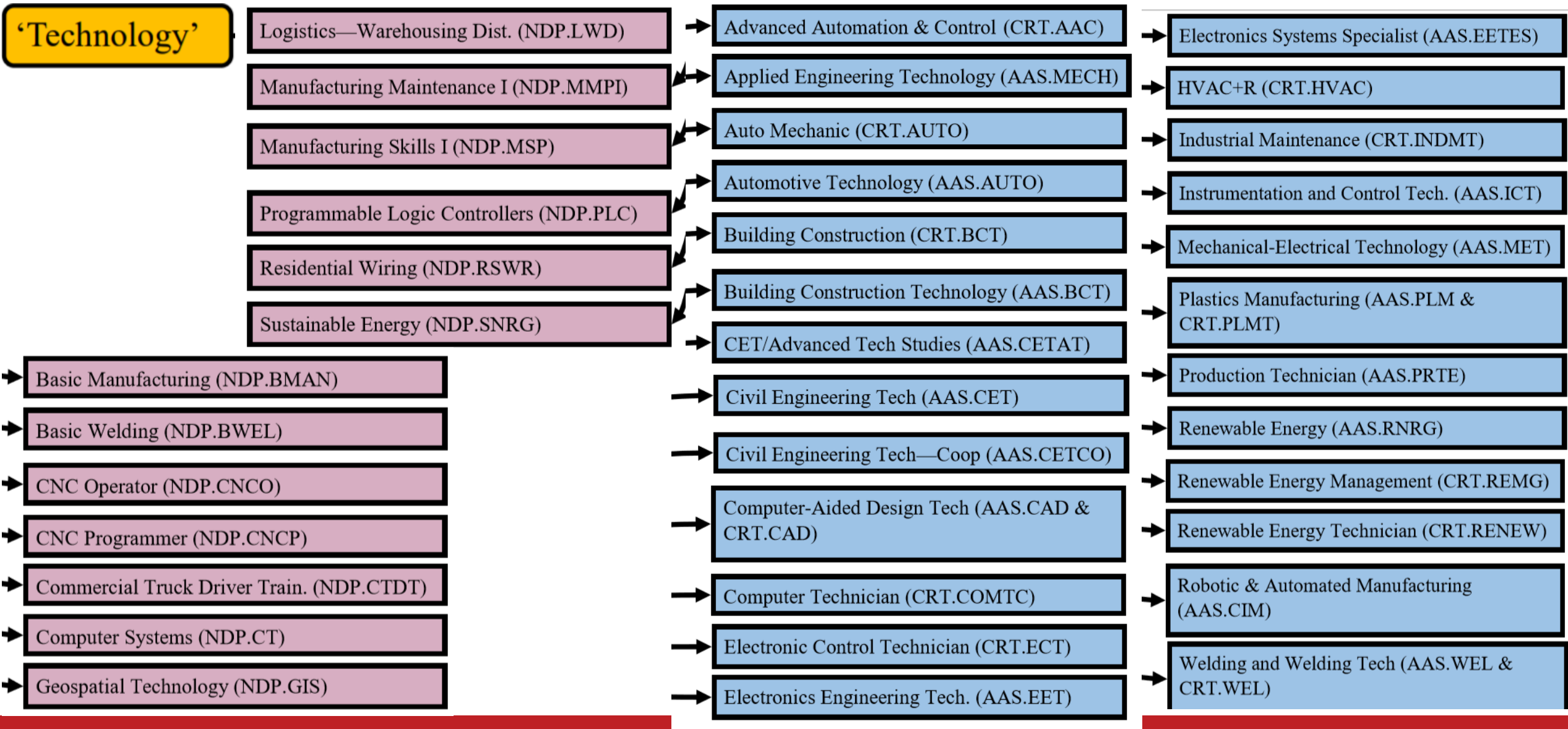


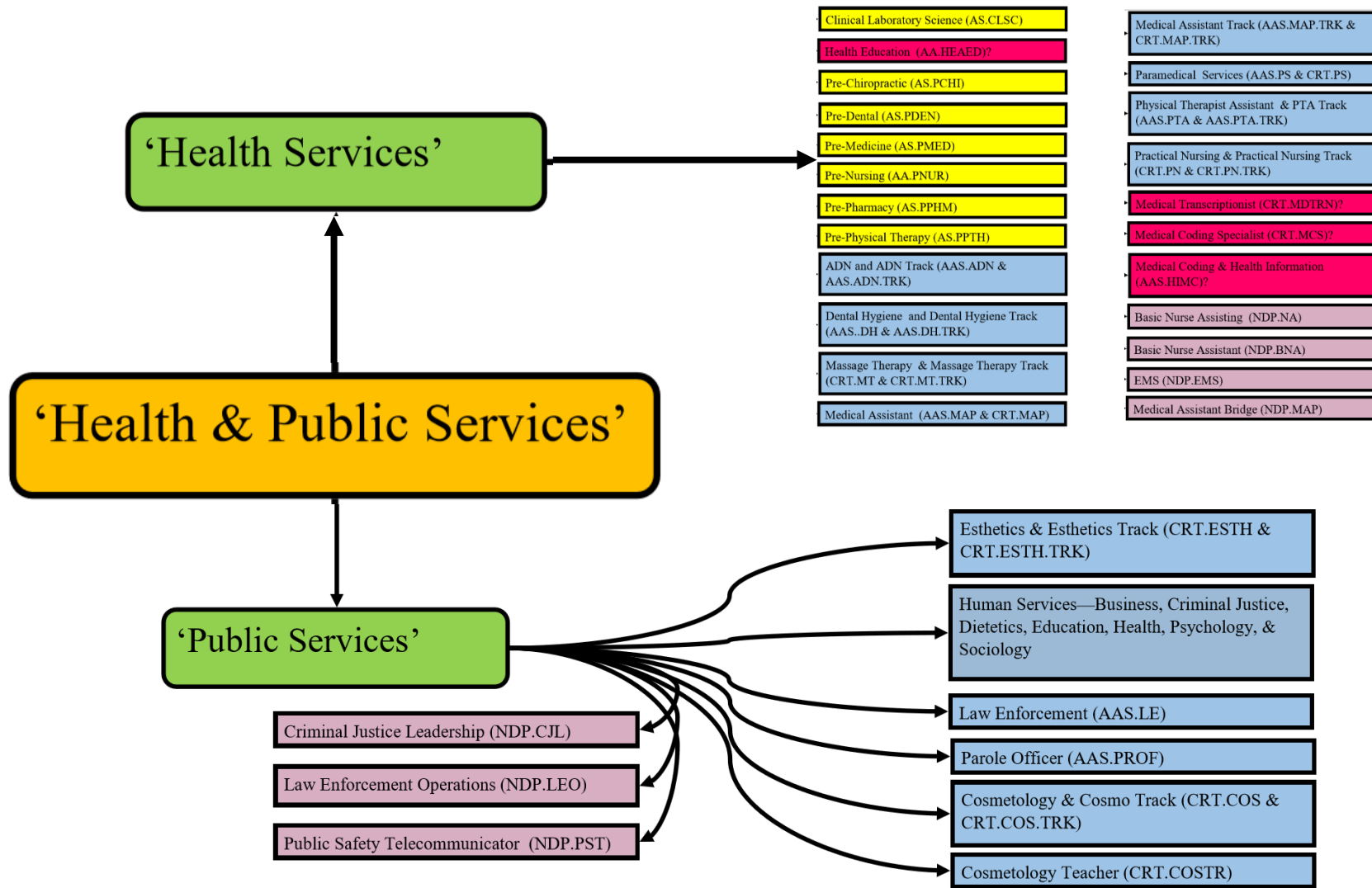


‘Math & Science’

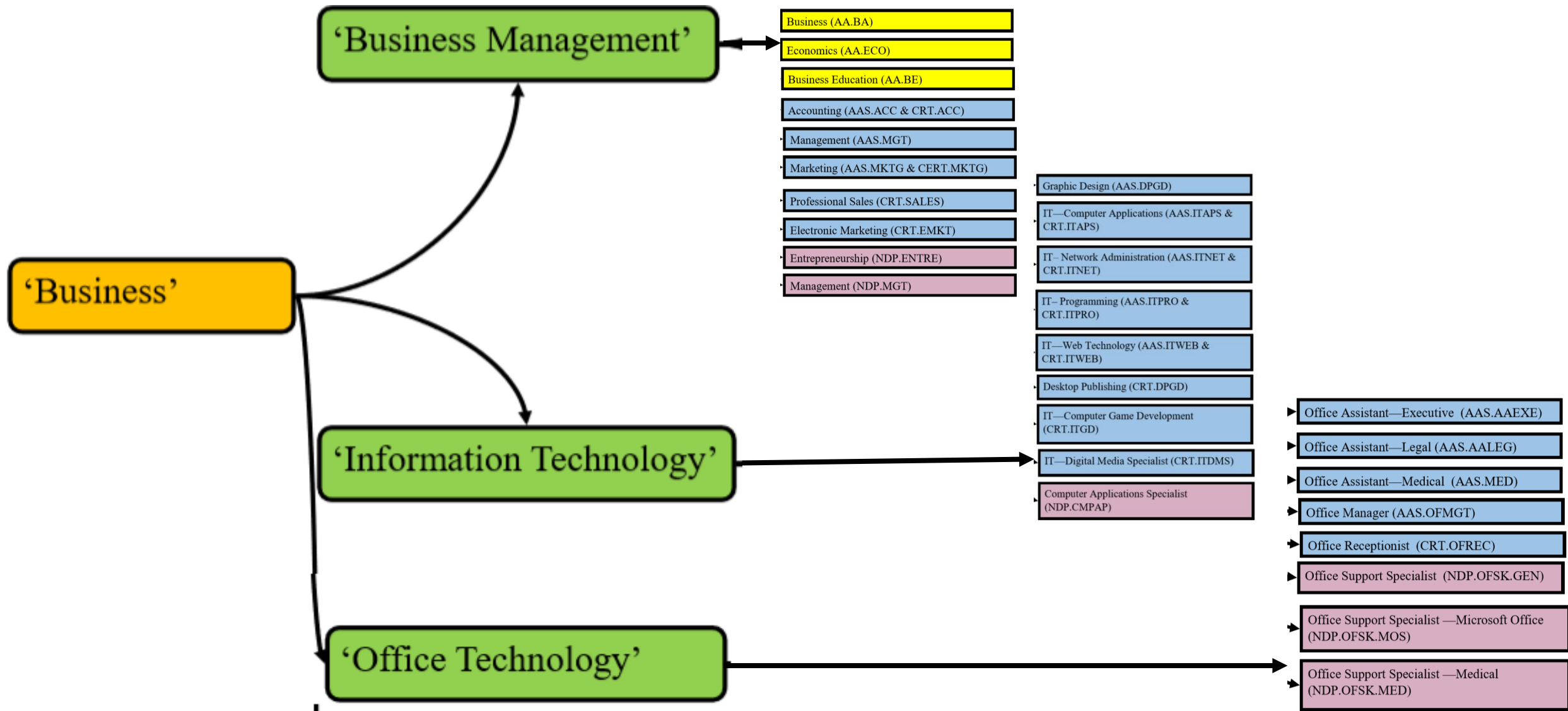
- Engineering Science (AES.ENGR)
- Bioscience Non-teaching (AS.BIOL)
- Chemistry (AS.CHEM)
- Mathematics Education (AA.MAED)
- Conservation/Pre-Forestry (AS.CONSF)
- Conservation/Pre-Wildlife (AS.CONSW)
- Earth Science (AS.EASC)
- Environmental Science (AS.ENSF)
- Mathematics (AA.MATH)
- Physics (AS.PHYS)
- Pre-Engineering (AS.PENG)
- Secondary Ed.—Biology (AA.SCED.BIO)
- Secondary Ed. —Chemistry (AA.SCED.CHM)
- Secondary Ed.—Physics (AA.SCED.PHY)

LAKE LAND
COLLEGE





LAKE LAND
COLLEGE



COMMON QUESTIONS

- How is this **different** from what we are currently doing?
- Will meta~majors **change my division** or to whom I report?
- Will a student **have to choose a meta~major** or can they still choose a specific major?



**ANY
QUESTIONS?**

LAKE LAND
COLLEGE